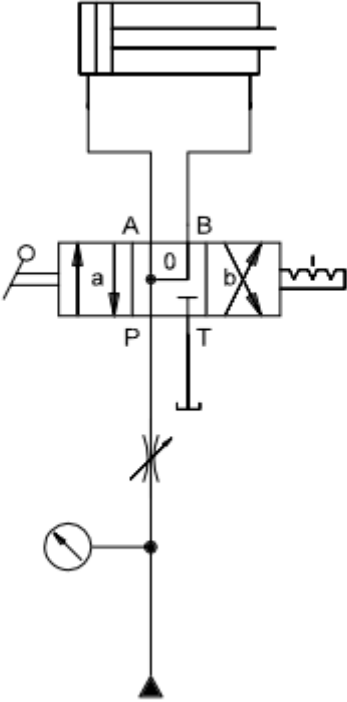
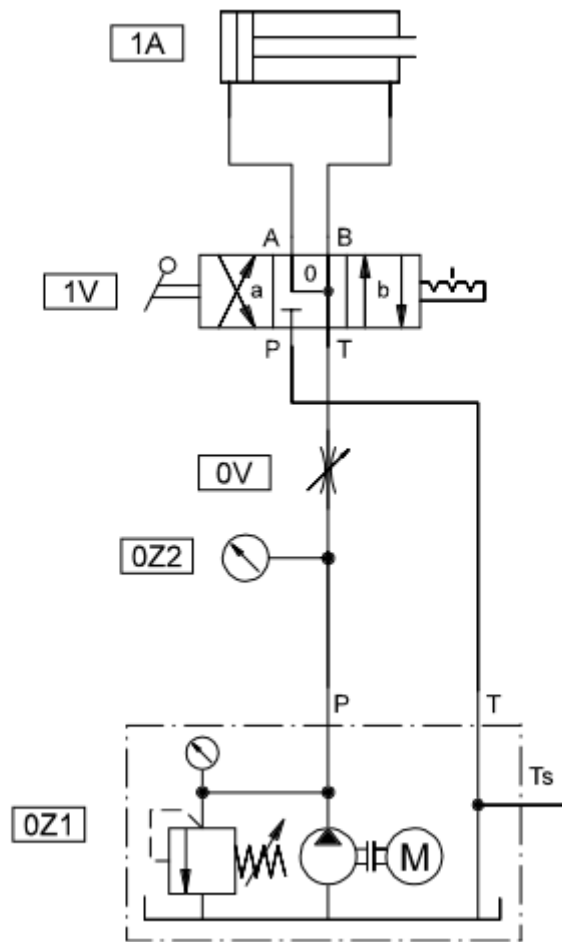


Rozwiązanie ćwiczenia 7



Montaż praktyczny



<i>Item no.</i>	<i>Qty.</i>	<i>Description</i>
0Z1	1	Hydraulic power pack
0Z2	1	Pressure gauge
0V	1	Throttle valve
1V	1	4/3-way hand-lever valve
1A	1	Cylinder, double-acting
	8	Hose line
	1	Stop-watch